

# aMBUSH's Curated Guide to Canberra



# Canberra

A city in which nature seamlessly intertwines into urban spaces, the nation's capital is much more than museums and monuments. Wrapped in idyllic nature, surrounded by scenic walking trails and filled with world-class restaurants and iconic national attractions, Canberra offers the peak experience and is the perfect short break destination from Sydney, Melbourne and beyond.

Kambri at ANU is an innovative cultural precinct with a diverse range of retailers, including an eclectic mix of small cafes, shops and vibrant eateries that each bring their own character to the space. It is also becoming known as Canberra's home for live music and performances. Additionally, Kambri has many lifestyle offerings and health and wellbeing facilities, such as a gym, a pool, a bookshop as well as a grooming and urban fashion store. With three hours of free parking on the weekends within the Kambri carpark, the precinct is the ultimate meeting place just minutes away from the CBD. Braddon also boasts a thrilling shopping and foodie precinct with a range of boutiques, cafés, bakeries, restaurants and bars.

Various outdoor adventures are also handily located within the city such as breathing the fresh air at the top of Mt Ainslie, where you are bound to see native wildlife. Enjoy a picnic accompanied by the best views of Canberra at the National Arboretum, or even just a stroll or bike ride around Lake Burley Griffin.

There is also an abundance of hip hotels including chic new architectural and cool contemporary options, you'll find the standard you expect to make your stay as comfortable and exciting as possible – some of the best restaurants in town are also in close proximity to these spots.

This curated guide to Canberra provides big-hitting diners, local bars and hidden gems that are all must-sees when visiting the capital.

Follow this link to view a map of Canberra's CBD and surrounding areas:

[City Map](#)

Explore [Visit Canberra](#) for more city info.

# Art & Culture

## Kambri at ANU

- Tangney Road, Acton

Kambri is a cultural precinct situated within the heart of the Australian National University (ANU) campus in Canberra.

Within Kambri is aMBUSH Gallery, Exhibition Avenue as well as a Cultural Centre which houses a theatre, cinema and a large hall, accommodating live music events and concerts.

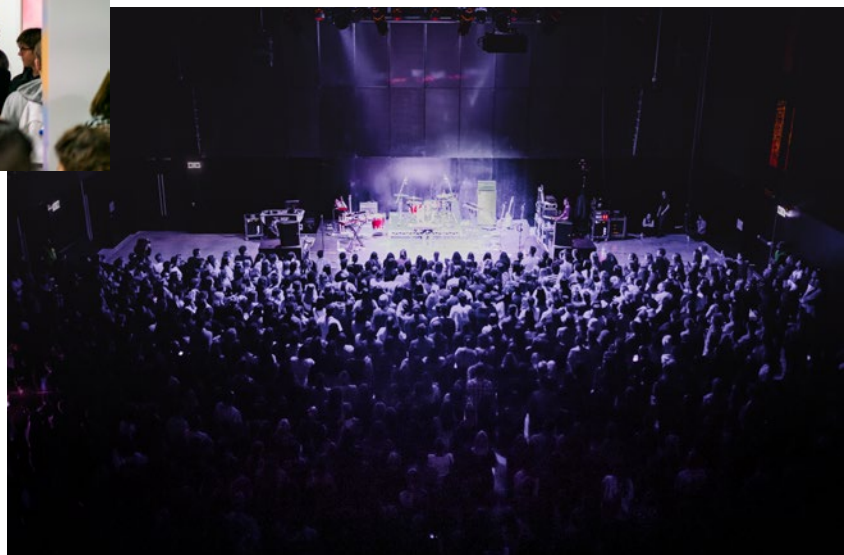


Source: Martin Ollman Photography (While You Were Sleeping - Kambri at ANU)



Source: Martin Ollman Photography (Mirrung - aMBUSH Gallery)

A staple within the Kambri Cultural Centre is Manning Clark Hall. The magnificent event space is increasingly becoming a new home for live music within the capital. The space has a capacity of 1,000 people, allowing it to host major concerts.



Source: Martin Ollman Photography



Source: Martin Ollman Photography

The purpose-built amphitheatre is the place to eat lunch, watch concerts and soak up the village atmosphere on the tiered grass seating overlooking Sullivan's Creek.

During the summer months, the amphitheatre plays host to the Kambri Film Festival, comprised of afternoon and evening film screenings within the heart of the university.

## **Art at the Australian National University**

Situated on campus at ANU are three distinct galleries.

**The School of Art & Design Gallery** critically frames contemporary art and design practice and draws on the School's rich academic research across studio-based disciplines and the Centre for Art History and Art Theory.

**ANU Drill Hall Gallery** is the venue of choice for many of Australia's leading contemporary artists, curators and collectors, continuing a proud tradition of impeccably presented landmark exhibitions accompanied by scholarly publications.

**Llewellyn Hall** is Canberra's premier concert hall. It is one of the finest acoustic venues in Australia and is home to many local and international acts.



Source: ANU SoAD



Source: Ildiko Kovacs, *The DNA of Colour*, installation view, Drill Hall Gallery, 2019. Photo: Rob Little.



Source: National Gallery - 'The Aboriginal Memorial'

## **National Portrait Gallery**

- King Edward, Parkes

Discover a collection of Australia's most enigmatic faces. Come face to face with the famous, the infamous and the sometimes forgotten icons of Australian history, everyone from actress Cate Blanchett to football legend Adam Goodes.



Source: NPG



Source: East Hotel

**East Hotel**

- Canberra Avenue, Kingston

A contemporary, cool and vibrant apartment hotel situated between the shopping and restaurant hubs of Kingston and Manuka in Canberra’s prestigious “Inner South”. East is the ultimate location for your visit to the capital.

**Accommodation**

**Novotel Canberra**

- Northbourne Ave, Civic

Novotel Canberra has an abundance of entertainment, dining and retail stores at their doorstep. With a central location, a five minute walk to aMBUSH Gallery the hotel is within easy reach of many world class attractions.

**Ovolo Nishi Hotel**

- New Acton Precinct, New Acton

Cosy and compact, with artistic vibes, Ovolo Nishi luxury boutique hotel is the perfect base to begin exploring the sights of this creative city. Located in Canberra CBD near Commonwealth Park, there’s a wide variety of restaurants, cafés and shops right on their doorstep!

**QT Hotel**

- London Circuit, Civic

Located in the heart of Canberra, QT rooms bid farewell to beige. There’s a sense of cheek in the luxury chic that’s hard not to appreciate. Beautifully designed with added inflections.



Source: Ovolo Nishi



Source: Midnight Hotel, Autograph Collection

**Midnight Hotel, Autograph Collection**

- Elouera Street, Braddon

A lifestyle you won’t want to leave - Midnight Hotel invites guests to experience the beat of a growing city, the personal touch of exceptional service and above all, welcomes originality and authenticity in a celebration of high design.

# Food + Drink

## Kambri at ANU



Source: Martin Ollman Photography - The Lawn

### The Lawn

Surrounded by landscaped gardens, local retailers and public seating, the Lawn is the lively heart of Kambri.

The new town centre of ANU is a great setting for markets, live music gigs and public gatherings, with visitors relaxing on beanbags or reclining on the grass.

The Lawn and Joplin Lane boast the following retailers:

- [Aither](#)
- [Azure Dragon](#)
- [Baba Juice Bar](#)
- [Badger and Co.](#)
- [Ballistic Burrito](#)
- [Broger Burger](#)
- [Chatime](#)
- [Char Char](#)
- [China Plate](#)
- [Club Lime](#)
- [Coffee Lab](#)
- [Commonwealth Bank](#)
- [Craft Beans](#)



Source: Florian Groehn Photography



Source: Martin Ollman Photography - The Lawn

### Joplin Lane

Nestled on the edge of the Kambri precinct, Joplin Lane takes cues from Melbourne's laneway network.

Lined with chairs, tables and a diverse range of food, bars and service retailers, the pedestrian-only streetscape lends itself as an ideal location to host markets, street festivals and people-centric activities.



Source: Martin Ollman Photography - Joplin Lane

- [Daily Market](#)
- [Gangnam Lane](#)
- [Harry Hartog](#)
- [Hot Star](#)
- [Kebab](#)
- [Kriss Kross](#)
- [Kukula's](#)
- [Mamas Palms](#)
- [Milligram](#)
- [National Health Co-op](#)
- [Nosh](#)
- [PARSA Cycles](#)
- [Otto's Kiosk Cafe](#)
- [Rex Espresso](#)
- [Sushi Smith](#)
- [ShareTea](#)
- [T Brows](#)
- [The Campus Bakery](#)
- [Uni Super](#)
- [University Pharmacy](#)
- [UP Academy](#)
- [Urban by Asian Tiger](#)
- [Vodafone](#)
- [What the Pho](#)
- [Z Cosme](#)

# Brew & Brunch

## INTRA

- Lonsdale Street, Campbell

INTRA is a specialty coffee and food venue located in leafy Campbell. They pride themselves on providing an outstanding service that is casual and relaxed. Simple and sustainable food is a driving principle in their menu.



Source: Her Canberra - INTRA

## Clay

- David Street, Turner

A neighbourhood espresso bar conveniently located just off of Northbourne Avenue. Teeny-tiny and full of heart, pastries, and delicious coffee.



Source: Clay

## Highroad

- Woolley Street, Dickson

With a focus on specialty coffee, locally sourced ingredients and innovative menu items, Highroad is an inclusive venue designed for the community to gather and enjoy contemporary food in a modern setting.



Source: Highroad



Source: Good Food - Barrio Collective

## Barrio Collective Coffee

- Lonsdale Street, Braddon

A little shop that is dedicated to simplicity and quality through delicious coffee and food. Barrio believe good quality coffee should be accessible and kept simple – something people can enjoy every day in a welcoming environment.

# Into the Night

## **Pilot.**

- Wakefield Gardens,  
Ainslie

Pilot. is a small venue in the suburb of Ainslie, with just one small dining room. The menu and drinks list are forever changing and aims to use seasonal ingredients to showcase complex flavours and exciting dishes.

## **EightySix**

- Elouera Street, Braddon

A vibrant, modern restaurant located in the Canberra inner-city suburb of Braddon. Its buzzing atmosphere and sensational food have earned it a reputation as a must-do on the Canberra restaurant circuit.



Source: EightySix



Source: XO

## **XO**

- Iluka Street, Narrabundah

Committed to sharing their passion for food and the communal share plate culture of Asian dining, XO delivers an innovative, modern approach to traditional South East Asian cuisine that is grounded by an unwavering commitment to unpretentious, honest food and the highest standards of service.

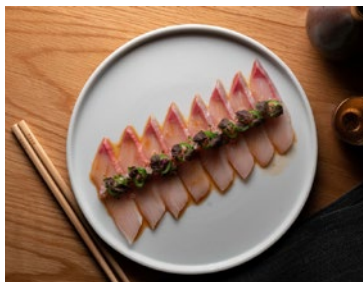


Source: XO

## **Rebel Rebel**

- Marcus Clarke Street, Acton

Rebel Rebel is a rustic chic space that makes the transition from trendy breakfast hotspot to moody dinner location seamlessly. Chef Sean McConnell takes full reigns of the menu to create unique breakfast combinations and exceptionally executed dishes from lunch through to dinner.



Source: Raku

## **Raku**

- Bunda Street, Civic

RAKU combines the precision and artfulness of Japanese culinary history with the vibrant energy of modern Australian dining. Their sushi team crafts beautiful plates of sashimi, nigiri and maki rolls, whilst the robata grill produces meat, seafood and vegetable dishes that sing with the flavours of the flames.

## **White Chaco**

- Lonsdale Street, Braddon

White Chaco delivers heartfelt Asian fusion cuisine. They have a wide range of Taiwanese and Japanese dishes to create an unique culinary experience for customers.

The drinks list is also extensive, a perfect place to start any evening before a night out.



# The perfect drink



Source: Capital Brewing Co

## **Capital Brewing Co.**

- Dairy Road, Fyshwick

Set in the exciting Dairy Road precinct is Capital Brewing Co.'s award winning tap house. Nestled amongst the massive tanks of the working brewhouse is a 24-tap bar pouring all the Capital mainstays plus seasonal and specialty brews.

Enjoy a tasting paddle next to the fireplace, play brewery games in the spacious beer garden, or let the kids conquer the cubby in the backyard.

Sustainability is a key focus for Capital who turn out "Good Natured Brews" using pristine Canberra water and the finest local ingredients to craft exceptional award winning beers.

Brodburger (a city favourite) is also situated here.



Source: Bar Rochford

## **Bar Rochford**

- London Circuit, Civic

Bar Rochford, winner of Gourmet Traveller's 2018 Bar of the Year, is hidden upstairs in one of the capital's oldest buildings – the Melbourne Building. They're all about fine food, exciting wine producers and good jams. They pull records, sharp spirits and love good service.

## **Sideway**

- E Row, Civic

Sideway is a cosy, stylish bar and live music venue in the city centre's Sydney Building. Open Wednesday to late Saturday night, the venue puts on experimental performances and also hosts free live music evenings every Thursday where local talent take the stage.

# **Lerida Estate**

- The Vineyards Rd, Collector, NSW

- Canberra Visitors Centre, Regatta Point

Lerida Estate Winery strives to provide a welcoming and memorable visitor experience and is dedicated to making distinctive, world-class wines that represent the unique and beautiful site on which they are grown.

Nestled at the foot of the Cullerin Range at Lake George it is a perfect day trip and stop over for any Sydneysiders on their way back home. There is also a newly opened Cellar Door at the Canberra Visitors Centre on Regatta Point. Wine tasting and drinks with awesome views over Lake Burley Griffin!



Source: Lerida Estate

# Markets



## Haig Park Village Markets

- Haig Park, Braddon

Running every Sunday at the beautiful leafy grounds of Haig Park, Braddon, the Haig Park Village Markets is open from 9am to 2pm. Pick up fresh produce, beautiful blooms, artisan breads, handmade crafts as well as delicious foods and treats. There will be live music, places to relax and eat, family friendly and a great place to bring your furry friend. Grab your favourite people and a picnic rug and come join us, there is no better way to spend your Sunday!

Source: Haig Park Village Markets

# Shopping

## Sancho's Dirty Laundry

- Lonsdale Street, Braddon

Labelled 'so Melbourne' - Sancho's Dirty Laundry are big supporters of independent brands, both local and worldwide, as well as the artists and designers behind them. This store is a must-visit if you are in the area.

## Pop Canberra

- Lonsdale Street, Braddon

POP Canberra is a breath of fresh air on the retail scene: focused on supporting small businesses, makers and artists who all work and live in the Canberra region, it offers a truly local shopping experience.



Source: HIVE



Source: Paranormal Wines

## Paranormal Wines

- Provan Street, Campbell

A cool new bottle shop-meets-bar is a mecca for lovers of quirky, out-of-this-world wines. Perfect for a pop into on your way to dinner, when it's BYO and you need to impress with a fancy drop.



Source: Pop Canberra

## HIVE

- Lonsdale Street, Braddon

HIVE sells products that are made to last; honest well-made goods that are beautiful and useful with a bit of fun and whimsy added to the mix.

All products are ethical and sustainable and make sensational gifts!

# Get a Move On Sightseeing

## **National Arboretum**

- Molongolo Valley

A mosaic of living forests and gardens offering breathtaking views, unique experiences, and a world-class entertainment and events hub including the award-winning Margaret Whitlam Pavilion and the popular Village Centre.

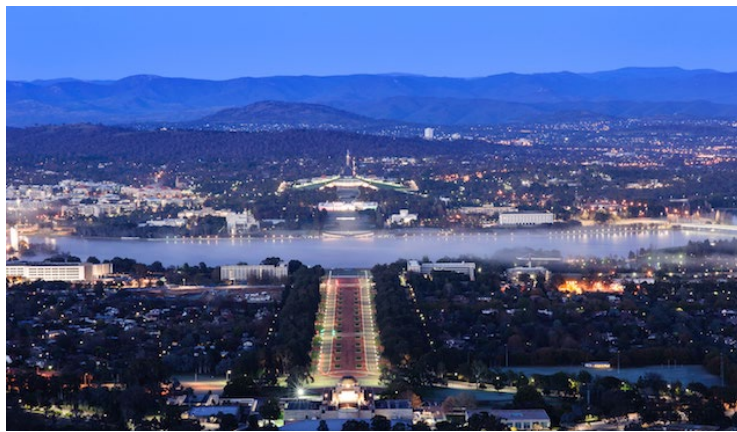


Source: Matt Evans

## **Lake Burley Griffin**

A landmark that locals love and use just as much as visitors. The lakeside parks and paths are the city's outdoor fitness arena, with many people walking, running or cycling the five-kilometre bridge-to-bridge stretch.

Explore the many landmarks and memorials on the way including Commonwealth Park, which in spring hosts Floriade, Australia's largest spring festival.



Source: Visit Canberra

## **Mount Ainslie Lookout**

- Ainslie,

Mount Ainslie provides picture-perfect views of Canberra. Walk, cycle or drive to the lookout and enjoy the impressive scenery, lovely at all times but a particular treat at sunrise and sunset.

Take in Lake Burley Griffin and many of Canberra's national attractions, framed by picturesque mountain ranges. A hotspot for photographers, the vista is complemented by the abundance of native birds and wildlife.

## **Transport**

Flying to Canberra takes 1 hour from Melbourne and 55 minutes from Sydney. Driving from Melbourne takes 7 hours while travelling by car from Sydney takes 3.5 hours.

### **Bus**

Murrays offers a frequent Sydney–Canberra (return) bus service. Departing from Sydney Central Station and also the Sydney Domestic Terminal, the buses arrive at the Jolimont bus station in Canberra's CBD. Tickets are priced around \$45 and the trip takes 3.5 hours. Services run every hour.

### **Train**

Modern trains are well-equipped, comfortable, and will take you from Sydney Central railway station to Canberra Kingston station in 4.5 hours. Tickets are \$50.

### **Bus**

Travel between Melbourne and Canberra in a convenient and comfortable Greyhound coach from \$99. The coaches arrive in the heart of Canberra in 8.5 hours, eliminating the need for a transfer.

### **Train**

With one daily departure, the high-speed trains can cover the distance between Melbourne and Canberra in a matter of just 13.5 hours. Passengers are welcome to take advantage of comfortable seats and generous legroom. Tickets are \$100.

# Contact Details

---

## aMBUSH Gallery Canberra

Address:

The Australian National University,  
Level 2, Building 153 Kambri  
Cultural Centre, Acton ACT 2601

Phone:

(02) 6249 7147

Opening Hours:

Monday - Friday: 10am - 6pm  
Saturday - Sunday: 12 - 5pm

---